

FM/AM Portable CD Player

Operating Instructions 使用说明书



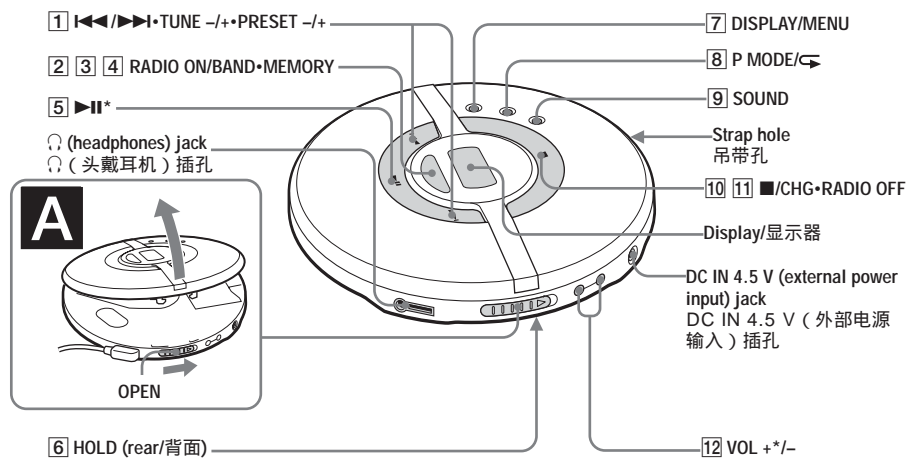
D-FJ200

©2003 Sony Corporation Printed in China

<http://www.sony.net/>

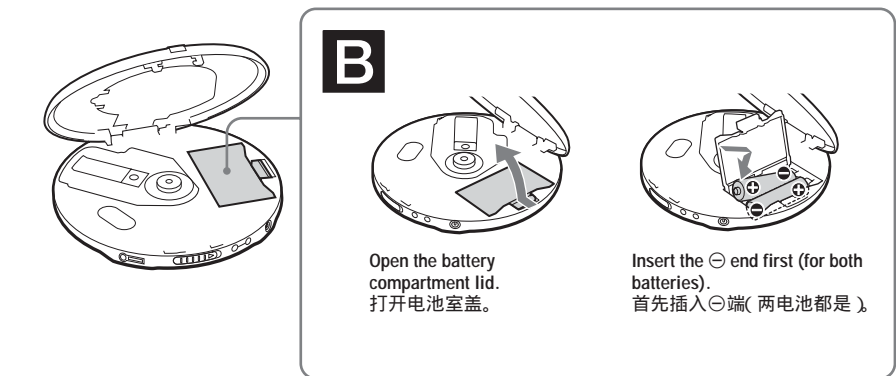
“WALKMAN” is a registered trademark of Sony Corporation to represent Headphone Stereo products. WALKMAN is a trademark of Sony Corporation.

CD player (front)/CD 播放机 (正面)

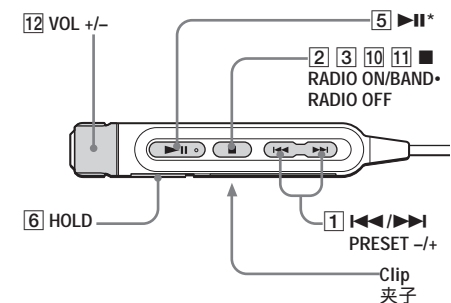


*The button has a tactile dot.
* 按键带有触感圆点。

CD player (inside)/CD 播放机 (里面)

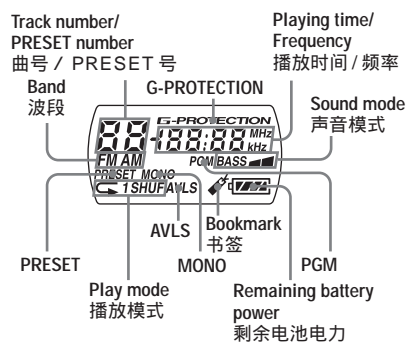


Remote control/遥控器



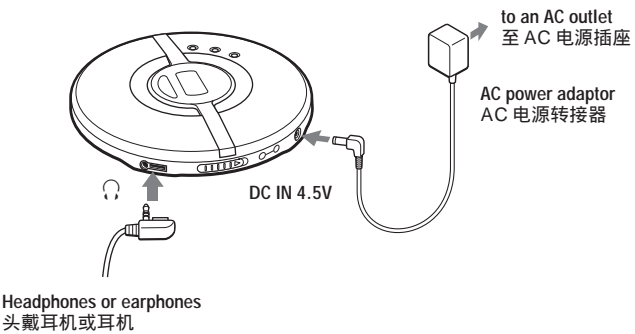
*The button has a tactile dot.
* 按键带有触感圆点。

Display on CD player/CD 播放机上的显示

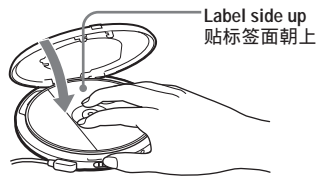


注 限使用附带的遥控器。不能用其他CD播放机所附带的遥控器去控制操作本CD播放机。

C



D



E



WARNING

To prevent fire or shock hazard, do not expose the unit to rain or moisture.

Do not install the appliance in a confined space, such as a bookcase or built-in cabinet.

To prevent fire, do not cover the ventilation of the apparatus with newspapers, tablecloths, curtains, etc. And don't place lighted candles on the apparatus.

To prevent fire or shock hazard, do not place objects filled with liquids, such as vases, on the apparatus.

CAUTION

The use of optical instruments with this product will increase eye hazard.

Certain countries may regulate disposal of the battery used to power this product. Please consult with your local authority.

CAUTION

- INVISIBLE LASER RADIATION WHEN OPEN
- DO NOT STARE INTO BEAM OR VIEW DIRECTLY WITH OPTICAL INSTRUMENT
- CLASS 1M INVISIBLE LASER RADIATION WHEN OPEN
- DO NOT VIEW DIRECTLY WITH OPTICAL INSTRUMENTS

The validity of the CE marking is restricted to only those countries where it is legally enforced, mainly in the countries EEA (European Economic Area).

Power Sources

To use the AC power adaptor (C)

- 1 Connect the AC power adaptor to an AC outlet.

To use the batteries (B)

Use only the following batteries for your CD player:

Rechargeable batteries

Charge the rechargeable batteries before using them for the first time.

- NH-7WMAA

Dry batteries

- LR6 (size AA) alkaline batteries

To insert the batteries

- 1 Open the battery compartment lid inside your CD player.
- 2 Insert two batteries by matching the ⊕ to the diagram in the battery compartment and close the lid until it clicks into place.
- 3 When using the rechargeable batteries, connect the AC power adaptor to the DC IN 4.5 V jack of your CD player and an AC outlet, then press ■ CHG to start charging. The CD player charges the batteries. The indicator sections of [||||] light up in succession and “CHG” appears in the display. When the batteries are completely charged, the “CHG” and [||||] indicators get turned off. If you press ■ CHG after the charge has already been completed, the [||||] indicator flashes and “Full” appears in the display.
- 4 Disconnect the AC power adaptor.

Battery life* (approx. hours)

(When the CD player is used on a flat and stable place.)
Playing time varies depending on how the CD player is used.

	G-PROTECTION ON	OFF	RADIO ON
Two NH-7WMAA (charged for about 2 hours**)	14	12	21
Two Sony alkaline batteries LR6 (SG) (produced in Japan)	48	42	70

* Measured value by the standard of JEITA (Japan Electronics and Information Technology Industries Association).

** Charging time varies depending on how the rechargeable battery is used.

Button/Switch	Function/Operation
[8] P MODE/☞ (play mode/repeat)	For CD player: During play, press repeatedly until the play mode you want appears in the display. No indication: Normal play “1”: Single track play “SHUF”: Shuffle play “📌”: Bookmark track play “PGM”: PGM (program) play To repeat the play mode you selected, press and hold until “☞” appears. For radio: Press to switch the tuning mode and the preset mode.
[9] SOUND* ²	• Use to emphasize the bass-boosted sound. Press repeatedly to select BASS ■ or BASS ■■■. BASS ■■■ enhances more than BASS ■.* ³ • Also use to keep down the maximum volume to protect your hearing. Press and hold until “AVLS**” appears in the display. The AVLS function is turned on. To turn off the AVLS function, press and hold again until “AVLS” disappears.
[10] ■ (stop)/CHG (charge)	Press to stop playing. Also press ■ CHG on the CD player to start charging.
[11] RADIO OFF	Press to turn off the radio.
[12] VOL +/-	Press to adjust the volume.

* AMS = Automatic Music Sensor
** If you disconnect the power sources, all settings return to the defaults.
** If the sound is distorted when using the SOUND function, turn down the volume.
** AVLS = Automatic Volume Limiter System

To remove the CD

Remove the CD while pressing the pivot (E).



中文

警告

为防火灾或触电危险，切勿让机器暴露于雨中或潮湿处。

别把机器安装在诸如书橱或壁橱等密闭处。

为防火灾，请勿让装置的通风孔盖住报纸，桌布，窗帘等。也不可在装置上点放蜡烛。

为防火灾或触电危险，不可在装置上装饰花瓶等装满液体的物体。

一部分国家对于本产品的电源用电池可能规定有处置的标准。请洽询当地有关当局。

注意

- 开着时，将有看不见的激光辐射
- 别凝视激光束或直接用光学仪器观看
- 开着时，将有看不见的 CLASS 1M 激光辐射
- 别直接用光学仪器观看

CE 标志的有效性，仅限于那些有法律限制的国家，主要在 EEA (欧洲经济区) 国家。

连接电源

使用 AC 电源转接器 (C)

- 1 将 AC 电源转接器连接到 AC 电源插座。

使用电池 (B)

本 CD 播放机限使用下列电池：

充电式电池

- 初次使用充电式电池时，必须进行充电。
- NH-7WMAA

干电池

- LR6 (AA, 5号) 碱性电池

插入电池

- 1 打开 CD 播放机里面的电池室盖。
- 2 装入 2 个电池使 ⊕ 对准电池室中的图示，然后关上盖子至卡搭定位。
- 3 将 AC 电源转接器连接到您的 CD 播放机上的 DC IN 4.5 V 插孔和 AC 电源插座，然后按 ■/CHG 以开始充电。CD 播放机给电池充电。[||||] 指示灯各段陆续点亮，“CHG”出现在显示器上。当充电完成时，“CHG”和 [||||] 指示灯熄灭。充电完成后如果按 ■/CHG，[||||] 指示灯闪烁，“Full”出现在显示器上。
- 4 断开 AC 电源转接器。

电池使用时间* (大约小时数)

(在平稳表面使用 CD 播放机时)
播放时间因 CD 播放机的使用状况而异。

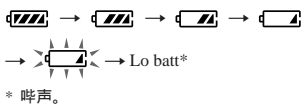
	G-PROTECTION 设定		
	ON	OFF	ON
两 NH-7WMAA (充电大约 2 小时**)	14	12	21
两 Sony 碱性电池 LR6 (SG) (日本制)	48	42	70

* JEITA (Japan Electronics and Information Technology Industries Association) (日本电子和信息技术产业协会) 的标准测值。

** 充电时间，随充电式电池的使用状况而异。

检查电池剩余电力

可以在显示器上检查。
当 [||||] 闪烁时请更换电池。



注

- [||||] 的指示段节粗示剩余电池电力。其一个段节不一定正确代表电池电力的四分之一。
- 根据操作条件，[||||] 的指示段节的使用时间可能增加或减少。

何时更换充电式电池

当电池使用时间缩短到大约一半时，即请更换新的充电式电池。

充电式电池须知

- 为保持充电式电池原有容量维持长时间的电池使用时间，请在完全耗尽电力时给电池充电。
- 新充电式电池或搁置长时间没用的充电式电池，可能不能完全充满电，须等充电使用过数次之后才能达到完全充满电。
- 请利用附带的电池携带盒以防意外生热。让充电式电池和金属小件物品混合放置，可能因发生短路而生热，甚至有起火危险。

使用干电池的注意事项

- 务必卸下 AC 电源转接器。
- 当电池用完时，同时更换两节新电池。

播放 CD

插入 CD

- 1 滑动 OPEN 打开顶盖 (A)。
- 2 把 CD 按入中心轴，然后盖上顶盖 (D)。

注

- 本 CD 播放机可以播放以激光光盘数码音频 (音频 CD) 格式录制的 CD-R/CD-RW。但播放能力取决于光盘质量和录音设备的状况。
- 本产品设计用于播放符合 Compact Disc (CD) 标准的光盘。近来，许多录制公司都出售各种用版权保护技术编码的音乐光盘。请注意，这些光盘中可能会有不符合 CD 标准的光盘，且可能无法用本产品播放。

操作 CD 播放机

按钮 / 开关	功能 / 操作
[1] [◀ ▶] (AMS** / 搜索) TUNE +/- PRESET +/-	对于 CD 唱机：朝 [◀] 或 [▶] 按此按钮一次查找当前/下一曲子的开头。反复按 [◀] 或 [▶] 查找前面/后面的曲子的开头。按住 [◀] 或 [▶] 快速/快进。 对于收音机：按此按钮调入所要的电台。也可按此按钮选择所要的预设电台。
[2] RADIO ON	按此按钮打开收音机。
[3] BAND	按此按钮改变波段。
[4] MEMORY	按此按钮进入预设模式。按此按钮也可在存储器中保存电台。
[5] [▶ ⏸] (播放 / 暂停)	• 按此按钮开始播放。再按一次暂停播放。 要从第一个曲子开始播放，当 CD 播放机停止时，按住此按钮 2 秒以上。 • 按下时也用于输入选择。
[6] HOLD	用于锁定控制钮以防止意外按动。
[7] DISPLAY/MENU	• 按一次显示“曲号和当前曲子剩余时间”。 按两次显示“剩余曲子和 CD 上的剩余时间”。 按三次显示“曲号和已播放时间 (正常播放)”。 • 按下时也用于输入菜单和选择。
[8] P MODE/☞ (播放模式 / 重现)	对于 CD 唱机：播放期间，反复按直到所要的播放模式出现在显示器上。 无显示：正常播放 “1”：单曲曲子播放 “SHUF”：随机播放 “📌”：书签轨迹播放 “PGM”：PGM (程序) 播放 要重现选定的播放模式，按住此按钮直到 “☞” 出现。 对于收音机：按此按钮切换调谐模式和预设模式。

English

Playing your favorite tracks by adding Bookmarks (Bookmark track play)

You can add Bookmarks to up to 99 tracks for each CD. You can use this function for up to 5 CDs.

To add Bookmarks

- During playback of the track where you want to add a Bookmark, press and hold **▶▶** until “” (Bookmark)” flashes in the display. When the Bookmark has been added successfully, flashing of “” becomes slow.
- Repeat step 1 to add Bookmarks to the tracks you want.

To listen to the tracks with Bookmarks

- Press P MODE/ repeatedly until “” flashes.
- Press **▶▶**. “” lights up in the display and the playback of the tracks with Bookmarks starts.

To remove the Bookmarks

During playback of the track with a Bookmark, press and hold **▶▶** until “” disappears from the display.

To check the tracks with Bookmarks

During playback of the tracks with Bookmarks, “” keeps flashing slowly in the display.

Notes

- During playback of the tracks with Bookmarks, tracks are played in order of track number, and not in the order you added the Bookmarks.
- If you try to add Bookmarks to the tracks on the 6th CD, the Bookmarks of the CD you played back first will be erased.
- All Bookmarks stored in memory will be erased:
 - if you remove all the power sources, or
 - if you continue playing the CD player on the rechargeable batteries without charging the batteries even though “Lo batt” is displayed.

Playing tracks in your favorite order (PGM play)

You can program the CD player to play up to 64 tracks in your favorite order.

- During playback, press P MODE/ repeatedly until “PGM” appears.
- Press **◀◀** or **▶▶** to select a track.
- To enter the selected track, press and hold **▶▶** until the playing order increases by one. “00” appears and the playing order increases by one.
- Repeat steps 2 and 3 to select the tracks in your favorite order.
- Press **▶▶** to start PGM play.

To check the program

During programming:

Press and hold **▶▶** repeatedly before step 5.

During the PGM play:

Press P MODE/ repeatedly until “PGM” flashes, then press and hold **▶▶** repeatedly. Each time you press **▶▶**, the track number appears.

Notes

- When you finish entering the 64th track in step 3, the first selected track appears in the display.
- If you select more than 64 tracks, the first selected tracks are erased.

Listening to the radio

- Press RADIO ON to turn on the radio.
- Press BAND until the band you want appears. Each time you press the button, the display changes as follows:

- FM → AM

- Press TUNE + or – (**◀◀** or **▶▶**) on the remote control) to tune in the station you want and adjust the volume.

Tuning mode and Preset mode

To switch the tuning mode and the preset mode, use P MODE/.

When the preset number appears in the display, the CD player is in the preset mode and you can use PRESET + or – to select the preset number.

To enter the tuning mode, press P MODE/ to make the preset number disappear from the display. Use TUNE + or – (**◀◀** or **▶▶**) on the remote control) to tune in the station.

To turn off the radio

Press RADIO OFF. (Press and hold RADIO ON/ BANDRADIO OFF on the remote control.)

To tune in the station quickly

Press and hold TUNE + or – in step 3 until the frequency digits begin to change in the display. The CD player automatically scans the radio frequencies and stops when it finds a clear station.

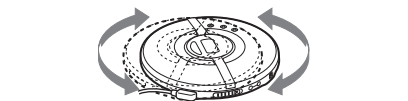
To improve broadcast reception

For FM, extend the headphones cord.



Headphones or earphones

For AM, reorient the CD player itself.



Note

Keep the headphones connected to the jack of the CD player. The headphones cord works as the FM antenna.

If it is hard to hear the FM broadcast

Press and hold P MODE/ until “MONO” appears in the display. The noise will be reduced but the radio will play in monaural.

When listening to the radio on batteries

If you connect the external power source plug to the DC IN 4.5 V jack of your CD player, the CD player will turn off. Turn it on by pressing RADIO ON to continue listening to it.

Presetting radio stations

- Press RADIO ON to turn on the radio.
- Press BAND to select the band.

- Press TUNE + or – (**◀◀** or **▶▶**) on the remote control) to tune in the station you want.
- Hold down MEMORY until “PRESET” flashes in the display.

From this step on, start the next operation within 30 seconds after you finished the previous operation. If 30 seconds pass with nothing done, “PRESET” stops flashing which shows that the CD player has exited the PRESET MEMORY standby mode. If this happens, start from step 4 again.

- Press PRESET + or – repeatedly to select the preset number you want to store the station on while “PRESET” flashes.
- Press MEMORY.

When the station is preset successfully, the beep sounds and “PRESET” stops flashing in the display. The new station replaces the old one.

To preset another station, press P MODE/ and repeat steps 2 to 6.

To exit the PRESET MEMORY standby mode

When the radio is turned on, you can exit the PRESET MEMORY standby mode using one of the following procedures. Preset stations, however, will remain stored in the CD player’s memory.

- Press and hold MEMORY until “PRESET” stops flashing.
- Do not press any button for 30 seconds. “PRESET” stops flashing.
- Press RADIO OFF. (Press and hold RADIO ON/ BANDRADIO OFF on the remote control.) The radio turns off.

To cancel all preset stations

- Disconnect the power source (rechargeable batteries, alkaline batteries or AC power adaptor).
- While you press and hold down MEMORY, connect the power source again. The indications in the display keep flashing until all preset stations are cleared, then stop flashing and disappear from the display.

Playing preset radio stations

- Press BAND to select the band.
- Switch your CD player to the preset mode*, then press PRESET + or – to tune in a stored station. *For details, refer to “Tuning mode and Preset mode.”

Other functions

You can make the following settings using the menu.

The timer function*1

You can set the CD player to stop playback automatically within a range of 5 to 95 minutes at 5 minute intervals. When the CD player is playing and the timer function is activated, the track number flashes on the display.

The G-PROTECTION function

This function has been developed to provide excellent protection against sound skipping during many active uses.*2

Turning off the beep sound

You can turn off the beep sound that is heard from your headphones/earphones when you operate your CD player.

Changing the tuning interval

When using the CD player abroad, change the AM tuning interval, if necessary.*3, *4

9 kHz area: Asia and Europe
10 kHz area: the U.S.A., Canada and South America

- When listening to the radio, this function does not work.
- Sound may skip.
 - if the CD player receives stronger continuous shock than expected,
 - if a dirty or scratched CD is played or
 - when using poor-quality CD-Rs/CD-RWs or if there is a problem with the recording device or application software.

- The interval will not change until you turn off the radio once and then turn it on again.
- After changing the tuning interval, you need to preset radio stations again.

How to set

- While play is stopped, press DISPLAY/MENU until “t-SEt” appears.

From this step on, start the next operation within 15 seconds after you finish the previous operation. If the indications on the display disappear, start from step 1 again.

- Press **◀◀** or **▶▶** to select the Menu 1 item, then press DISPLAY/MENU or **▶▶**. Menu 2 item starts flashing.

- Press **◀◀** or **▶▶** to select the Menu 2 item, then press DISPLAY/MENU or **▶▶** to enter the selection. When the item has been entered properly, the item stops flashing.

To return to the previous screen, press .

To cancel the setting operation, press and hold .

List of menus

Setting	Menu 1	→	Menu 2
Timer* 	t-SEt	→	--
			05
			:
			95
G-PROTECTION	SEt	on	off
Turning off the beep sound	bEEP	b on	b off
Changing the tuning interval	StEP	AM 9kHz	AM 10kHz

* You can set this item during both play and stop. When listening to the radio, this function does not work. The time set is estimated.

Note

If you disconnect the power sources, all settings return to the defaults.

Precautions

On safety

- Should any solid objects or liquid fall into the CD player, unplug it and have it checked by qualified personnel before operating it any further.
- Do not put any foreign objects in the DC IN 4.5 V (external power input) jack.

On power sources

- When you are not using the CD player for a long time, disconnect all power sources from the CD player.

On AC power adaptor

- Use only the AC power adaptor supplied. If your CD player is not supplied with it, use the AC-E45HG AC power adaptor. Do not use any other AC power adaptor. It may cause a malfunction.

Polarity of the plug



- Do not touch the AC power adaptor with wet hands.
- Connect the AC power adaptor to an easily accessible AC outlet. Should you notice an abnormality in the AC power adaptor, disconnect it from the AC outlet immediately.

On rechargeable batteries and dry batteries

- Do not charge the dry batteries.
- Do not throw the batteries into fire.
- Do not carry the batteries with coins or other metallic objects. It can generate heat if the positive and negative terminals of the battery are accidentally contacted by a metallic object.
- Do not mix rechargeable batteries with dry batteries.
- Do not mix new batteries with old ones.
- Do not use different types of batteries together.
- When the batteries are not to be used for a long time, remove them.
- If battery leakage occurs, wipe off any deposit in the battery compartment, and install new batteries. In case the deposit adheres to you, wash it off thoroughly.

On the CD player

- Keep the lens on the CD player clean and do not touch it. If you do so, the lens may be damaged and the CD player will not operate properly.
- Do not put any heavy object on top of the CD player. The CD player and the CD may be damaged.
- Do not leave the CD player in a location near heat sources, or in a place subject to direct sunlight, excessive dust or sand, moisture, rain, mechanical shock, unlevelled surface, or in a car with its windows closed.
- If the CD player causes interference to the radio or television reception, turn off the CD player or move it away from the radio or television.
- Discs with non-standard shapes (e.g., heart, square, star) cannot be played on this CD player. Attempting to do so may damage the CD player. Do not use such discs.

On headphones/earphones

Road safety

Do not use headphones/earphones while driving, cycling, or operating any motorized vehicle. It may create a traffic hazard and is illegal in some areas. It can also be potentially dangerous to play your headsets at high volume while walking, especially at pedestrian crossings. You should exercise extreme caution or discontinue use in potentially hazardous situations.

Preventing hearing damage

Avoid using headphones/earphones at high volume. Hearing experts advise against continuous, loud and extended play. If you experience a ringing in your ears, reduce volume or discontinue use.

Consideration for others

Keep the volume at a moderate level. This will allow you to hear outside sounds and to be considerate to the people around you.

Maintenance

To clean the casing

Use a soft cloth slightly moistened in water or a mild detergent solution. Do not use alcohol, benzine or thinner.

To clean the plugs

If the plugs become dirty, there is no audio or noise is heard. Clean them with a dry soft cloth periodically.

Troubleshooting

Should any problem persist after you have made these checks, consult your nearest Sony dealer.

“Hold” appears in the display when you press a button, and the CD does not play.

→The buttons are locked. Slide HOLD back.

The CD player does not start charging.

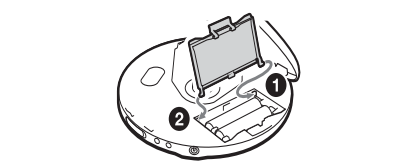
→During stop, press /CHG.
→You press on the remote control. Press /CHG on the CD player

The volume does not increase even if you press VOL + repeatedly.

→Press and hold SOUND until “AVLS” disappears from the display.

The battery compartment lid is detached by an accidental drop, excessive force, etc.

→Attach it as illustrated below.



Specifications

System

Compact disc digital audio system

Laser diode properties

Material: GaAlAs
Wavelength: λ = 780 nm
Emission adation: Continuous
Laser output: Less than 44.6 μW (This output is the value measured at a distance of 200 mm from the objective lens surface on the optical pick-up block with 7 mm aperture.)

Frequency range (Chinese model)
FM: 87.5 - 108.0 MHz
AM: 531 - 1 602 kHz

Frequency range (10k/9k) (except Chinese model)

- 9 kHz step:
FM: 87.5 - 108.0 MHz
AM: 531 - 1 602 kHz
- 10 kHz step:
FM: 87.5 - 108.0 MHz
AM: 530 - 1 710 kHz

Power requirements

- Two Sony NH-7WMAA rechargeable batteries: 1.2 V DC × 2
- Two LR6 (size AA) batteries: 1.5 V DC × 2
- AC power adaptor (DC IN 4.5 V jack): 220 V, 50 Hz (Model for China) 120 V, 60 Hz (Model for Mexico)
- Rated current: 500 mA

Dimensions (w/h/d) (without projecting parts and controls)

Approx. 135.8 × 24.3 × 135.8 mm

Mass (excluding accessories)

Approx. 191 g

Operating temperature

5°C - 35°C (41°F - 95°F)

Design and specifications are subject to change without notice.

Supplied Accessories

AC power adaptor AC-ET455K (1)
Headphones/earphones with remote control (1)
Rechargeable batteries (2)
Battery carrying case (1)

中文

给喜欢的曲子加记Bookmark以便选播（播放加记书签曲子）

每张CD最多能给99首曲子加记书签。最多能为5张CD使用此功能。

要加记Bookmark时

- 播放曲子当中，在所要加记书签处按住**▶▶**至显示器中闪烁着 “” (Bookmark) 。
- 当成功地加记完书签时，“” 闪烁即变慢。

- 反复步骤 1 给所有喜欢的曲子加记书签。

要利用Bookmark听曲子时

- 请反复按 P MODE/ 至闪烁着 “” 。
- 按**▶▶**。显示器中即点亮 “”而开始播放带有 Bookmark（书签）的曲子。

要去除Bookmark时

请在播放带有Bookmark（书签）的曲子当中，按住 **▶▶**至显示器中的 “” 消失了显示。

要检查带有Bookmark的曲子时

在播放带有Bookmark（书签）的曲子当中，显示器中的 “” 将闪烁得较慢。

注

- 在播放带有 Bookmark（书签）的曲子时，是以曲号顺序播放曲子的，而不是以您加记书签的顺序播放的。
- 您如果试图给第6张 CD 加记书签，则第1张播放的 CD 其所加记的书签，即被擦去。
- 存储在存储器中的所有 Bookmark（书签）都将被擦去：
 - 如果断开了所有的电源，或
 - 如果即使显示 “ Lo batt ” 的情况下，继续用充电式电池播放 CD 播放器，而不给电池充电。

按您喜爱的顺序播放曲子（PGM播放）

可按照所喜爱的顺序给CD播放机编程来播放最多64首曲子。

- 播放中，反复按P MODE/ 直到“ PGM ”出现。
- 按**◀◀**或**▶▶**选择曲子。
- 要输入选择的曲子时，按住**▶▶**直到播放顺序加1。“ 00” 出现，播放顺序加1。
- 重复步骤 2 和 3 以按喜爱的顺序选择曲子。
- 按**▶▶**开始 PGM 播放。

要检查程序时

编程中：
在步骤 5 之前反复按住**▶▶**。

PGM 播放中：
反复按 P MODE/ 直到“ PGM ” 闪烁，然后反复按住 **▶▶**。每次按 **▶▶**， 出现曲号。

注

- 在步骤 3，当您输入完第 64 首曲子时，显示器上即出现所选择的第 1 首曲子。
- 选择大于 64 首曲子时，第 1 首选择的曲子将被擦去。

听收音机

- 按 RADIO ON 打开收音机。
- 按 BAND 直到所要的波段出现。每次按此按钮，显示变化如下：

- FM → AM

- 按 TUNE + 或 –（遥控器上的 **◀◀** 或 **▶▶**）调入所要的电台并调节音量。

调谐模式和预设模式

要切换调谐模式和预设模式，请使用 P MODE/。

当预设号出现在显示器上时，CD唱机处于预设模式。可以使用 PRESET + 或– 选择预设号。要调入调谐模式，按 P MODE/使预设号从显示器上消失。使用CD唱机的 TUNE + 或–（遥控器上的 **◀◀** 或 **▶▶**）调入电台。

要关闭收音机

按 RADIO OFF。（按住遥控器上的 RADIO ON/BAND-RADIO OFF。）

要迅速调入电台时

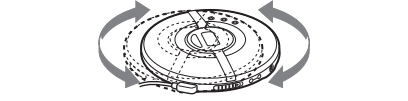
在第 3 步按住 TUNE + 或–直到频率数开始在显示屏中变化。CD唱机即自动扫描无线电广播频率，当找到声音清晰的电台时，即停止扫描。

要改善广播接收状况时

听 FM 时，可展开头戴耳机导线。



听 AM 时，可调整 CD 唱机本身的位置。



注
应使头戴耳机保持连接在 CD 唱机的 插孔上。因为头戴耳机导线也当作 FM 天线使用。

如果不能清楚收听 FM 广播

按住 P MODE/直到 “ MONO ” 出现在显示器上。

噪音可减轻，但只能收听单声道。

当用电池作电源收听收音机时

如果把外接电源插头连到CD唱机的DC IN 4.5 V 插孔，CD唱机的电源将关闭。此时，可按RADIO ON 打开电源继续收听。

预设电台

最多可预设 40 个电台：其中 FM 30 个，AM 10 个。

- 按 RADIO ON 打开收音机。
- 按 BAND 选择波段。
- 按 TUNE + 或 –（遥控器上的 **◀◀** 或 **▶▶**）调入所要的电台。